

EVOLUTIONARY ANTHROPOLOGY COLLOQUIUM SERIES

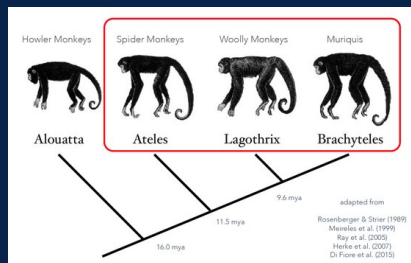
Tony Di Fiore

Professor, Department of Anthropology
University of Texas Austin

Monday, October 3, 4:10pm

<https://ucdavis.zoom.us/j/99736505722>
(Links to an external site.)

Comparative mating systems of atelin primates



I conduct long-term behavioral and ecological field research on several species in the primate community of tropical Ecuador and Colombia to investigate the ways in which ecological conditions (such as the abundance and distribution of food resources) and the strategies of conspecifics together shape behavior and social relationships and ultimately determine the kinds of societies we see primates living in. This is a crucial and central focus in evolutionary anthropology, as understanding the ways in which behavior and social systems are shaped by environmental pressures is a fundamental part of the discipline.

I complement my field studies with genetic and genomic laboratory work in order to investigate topics that are difficult to explore through observational studies alone, including questions about dispersal behavior, gene flow, mating patterns, population structure, and the fitness consequences of individual behavior. In collaboration with colleagues, I also use molecular techniques to investigate a number of broader questions concerning the evolutionary history, social systems, and ecological roles of various primates species from the Americas.